

Harp Rail

The Harp Rail instantly transforms your acoustic guitar into a Harp guitar. Simply attach the Harp Rail to your folk, classical or 12 guitar and start exploring the world of 6 free open bass strings.

Installing

1. Loosen the thumb screw on each clamp to the approximate depth of the guitar body.
2. Place your guitar face up on a table or in your lap.
3. Position the tail piece near the bridge on top of the guitar's soundboard in a slight angle away from the neck allowing enough clearance for your thumb on the neck.
4. Slide the clamp through the slot of the tail piece until it is flush with the body of the guitar and tighten securely.
5. Slide the other clamp through the upper slot until it is flush with the body of the guitar and tighten securely.
6. Now tighten each clamp firmly checking the position of the tailpiece. It should be flush with the guitar's soundboard as much as possible. This will ensure better coupling and maximum transfer of the bass strings vibration to the soundboard.

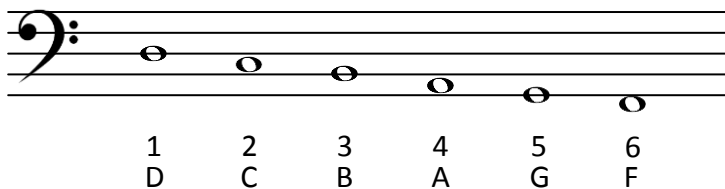
Removing

Reverse the steps in mounting the Harp Jig as described above.

The clamps are stored on a Velcro strip positioned on the back of the body of the Harp Rail.

Tuning

A suggested tuning is:



With this tuning you can play some common chord progressions.

For example:

C	G7	Am	F
F	Dm	Gm	C7
Am	D7	G	C

** Fretboard Explorer is not responsible for any damage to guitar that might occur during the use of the Harp Rail.*

Strings

The Harp Rail comes with the following gauge strings.

6	5	4	3	2	1
0.072	0.064	0.060	0.054	0.052	0.050

Strings can be purchased at <http://www.harpguitarmusic.com/strings.htm>

Amplification

A piezo transducer can be mounted on the tailpiece to amplify the Harp Rail.